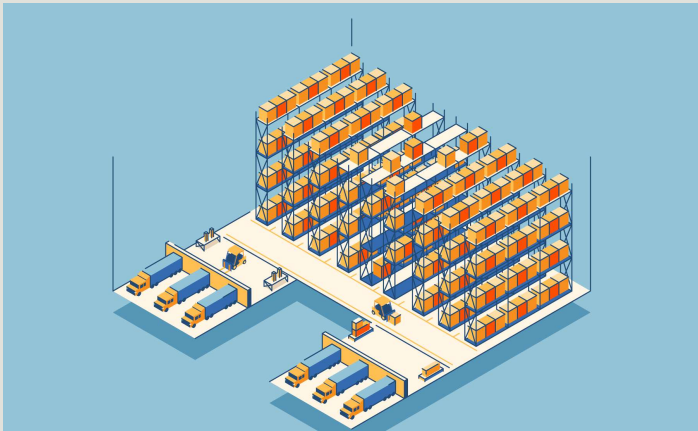




IE 4597 Proposal Presentation #14 Designing a Virtual Food-Distribution Warehouse, and Implementing an SAP- Based ERP System for the Facility Design

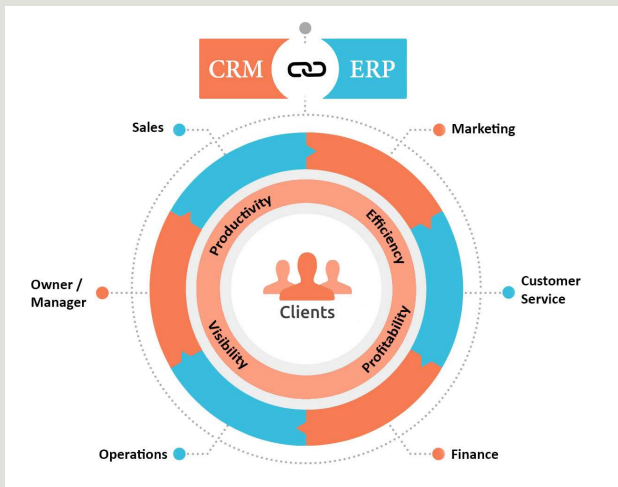
LSU INDUSTRIAL ENGINEERING

SEPTEMBER 23, 2022

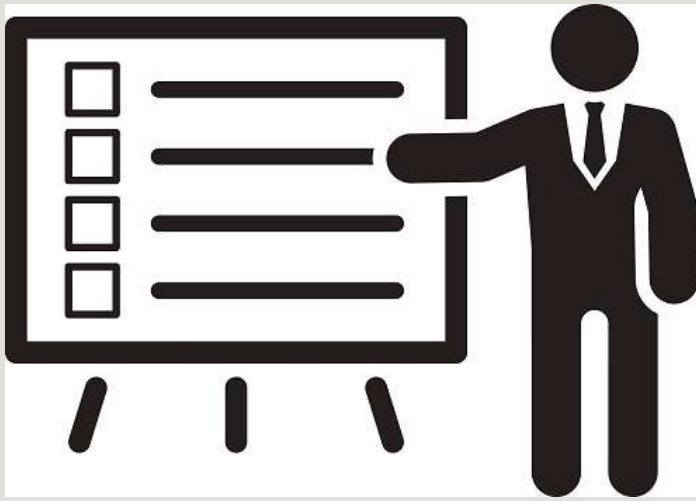


BY:
RYAN BOUDREAUX (3)
JOSHUA BROOMFIELD (4)
JARED HYMEL (11)
BRENNAN LACOUR (15)

Background



- **Founded in 1996 to help companies solve problems with technology.**
- **Focus on Enterprise Resource Planning (ERP) and Customer Relationship Management (CRM) systems.**
- **Provides solutions across major core industries**
- **SAP ByDesign: Popular cloud-based solution**



Problem Description

VistaVu lacks an ERP demonstration for food distributors, and they need to better serve those customers by having a tool to demonstrate SAP capabilities in a realistic setting.

Objectives

Fall Semester

- Design and Creation of a Virtual Grocery Distribution Warehouse
 - Size, staff, equipment
 - Product costs, shelf life, flow of material
 - OSHA and FDA Requirements

Spring Semester

- Implementation of SAP Business ByDesign for Operations
 - Master Data Creation
 - Inventory Movements and Counts
 - Purchase and Sales Orders



Deliverables

Final report that describes project details including the facility design and SAP implementation

User manual describing how to use the SAP System

Presentation of warehouse facility design and SAP By Design Implementation

Fully configured instance of SAP ByDesign



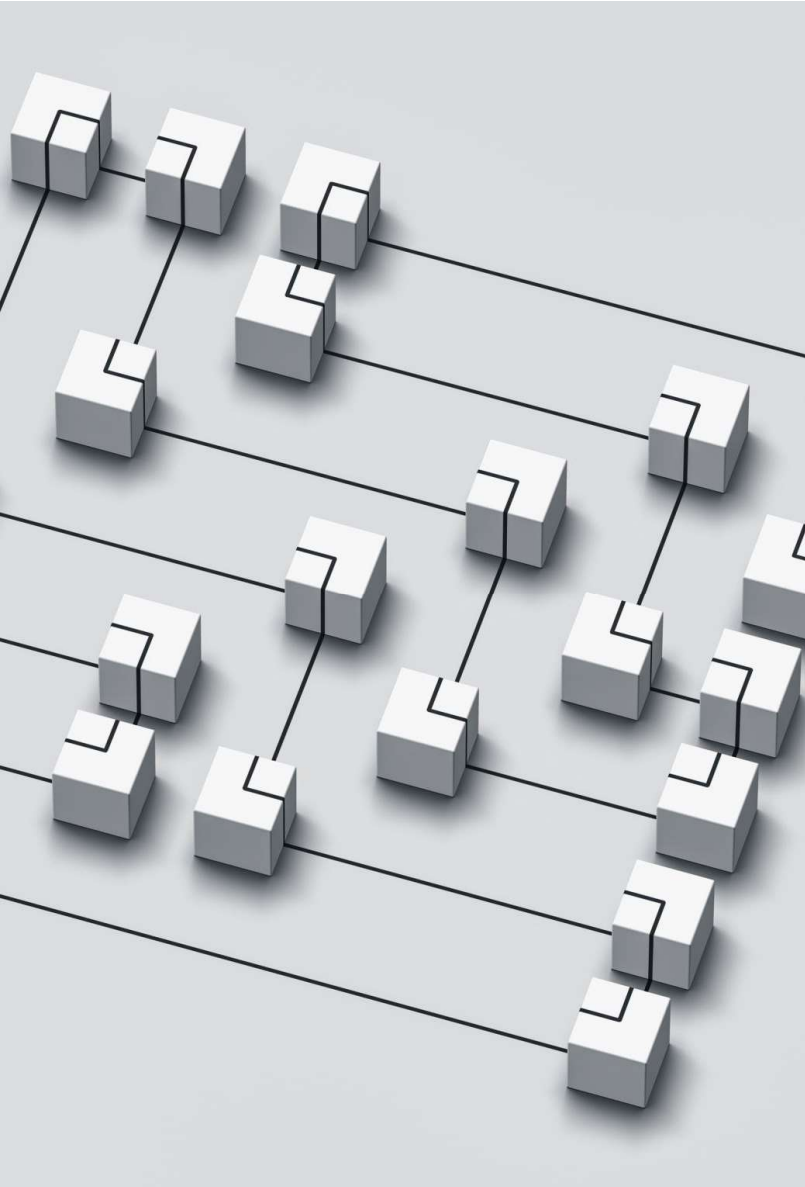
Resource and Design Requirements

- **Resource Requirements**

- Estimate 10-12 hours per week of work.
- Weekly Meetings with VistaVu (1-2 hours)
- Resources Needed:
 - SAP Business ByDesign Software
 - Time from VistaVu for meetings and trainings

- **Design Requirements**

- Ability to receive and ship products
- Capacity to store products meeting regulations
- Climate controlled storage
- Realistic shelf life and associated costs
- Accurately process transactions in SAP



Methodology - Data

- **Data acquired from trusted online sources**
 - Real estate listings
 - Used equipment auctions.
 - FDA and OSHA
- **Synthesize data to create a realistic depiction of the attributes of a warehouse.**
- **Use this data as inputs in facility design methods and SAP implementation.**

Methodology - Alternatives

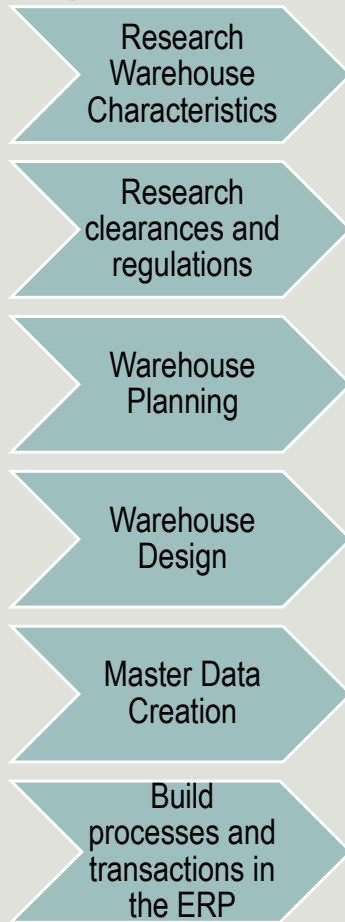
Identify	Identify warehouse systems typically seen in food-distribution
Develop	Develop a variety of alternatives ranging in capability & cost
Evaluate	Evaluate alternatives using Project Management techniques
Determine	Determine alternative having sufficient capability for the product mix at the lowest cost



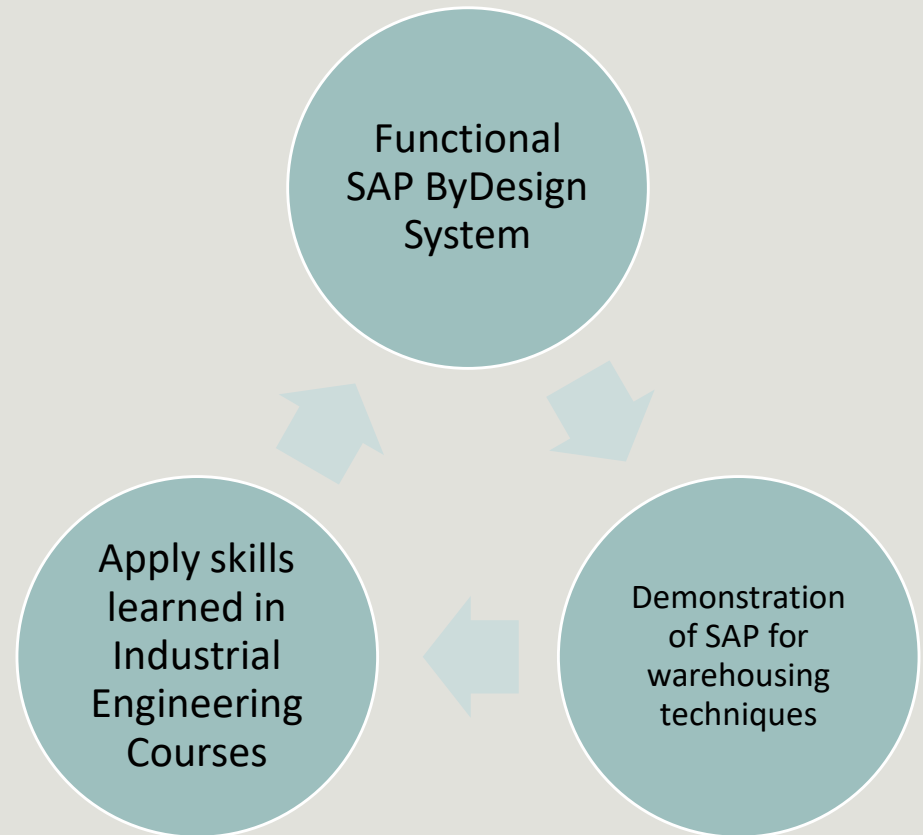
Methodology - Design & Costs

- Warehouse Design
 - EOQ
 - Personnel Requirements Models.
- Create SAP implementation .
- Costs for project are low, but will also track the costs of the virtual warehouse and its attributes

Project Plan



Expected Results



Project Schedule

Project Presentation

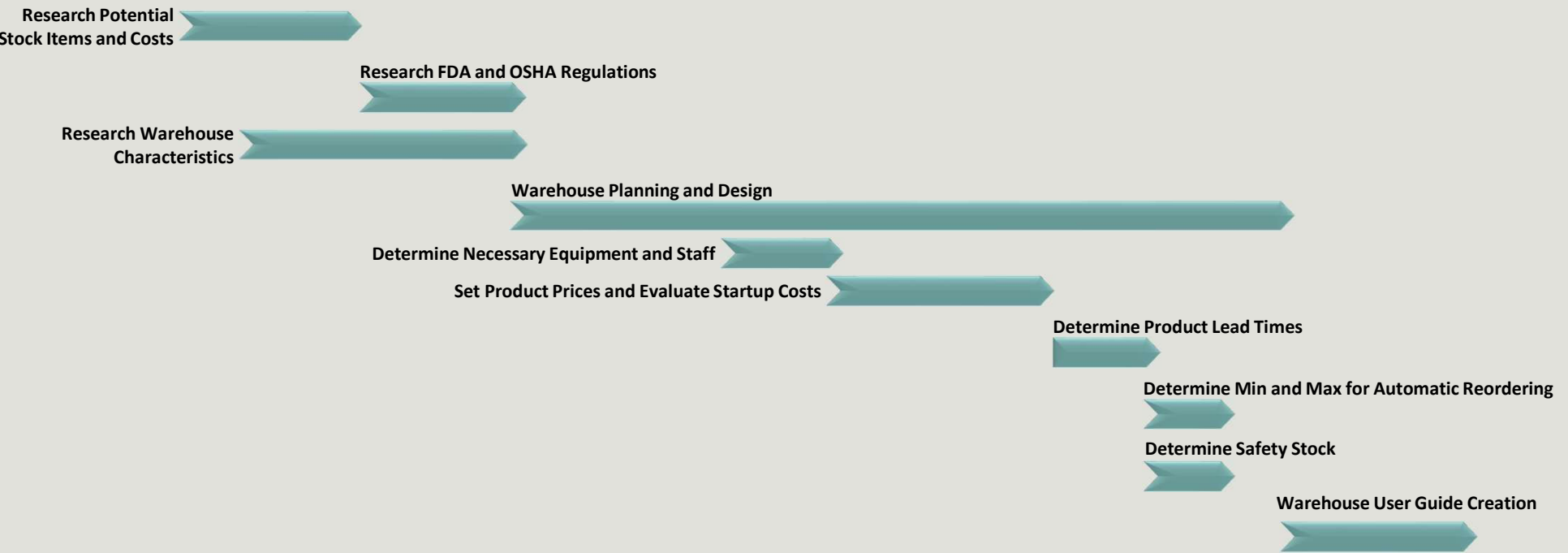
Dec 2



Dec

2022

Aug	Sep	Oct	Nov	Dec
Week 1	3	5	7	9
				11
				13



Questions
